



### INSIDE CORNER



### INSTALLATION GUIDELINES

#### STEP 1:

Unroll first course of **TamlynWrap® Rainscreen 6.3** horizontally with spacers facing the exterior and fasten to sheathing with cap-fasteners. **XtremeSeam™ Tape** is applied to the first course by removing one side of the release paper and for best results lay down with a hard roller or hand applicator.

#### Step 2:

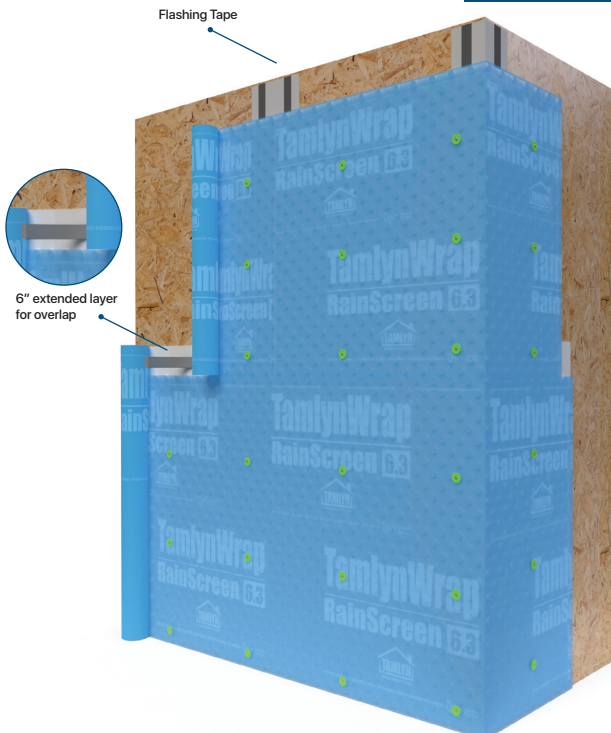
With this in-place unroll the next course of **TamlynWrap® Rainscreen 6.3** maintaining the required 6" of overlap, with fastening stopping 9" from the bottom of this course allowing for it to be folded.

Fold up and remove the release paper on the **XtremeSeam™ Tape** pressing the layers together, for best results use a hard roller or hand applicator. Then complete fastening along the seam.

#### Step 3:

To create a vertical seam between rolls, first roll out the 12" wide vertical flashing, and trim the length to fit the height of the wall. Then, adhere the flashing on the sheathing with the pre-installed seam tape from the back. Finally, **butt the edges of the rolls, and adhere them onto the pre-installed seam tape at the front of the flashing.**

### OUTSIDE CORNER



## STEP 1: Rough Opening

Install the Top Vent (VST) for rainscreen at the top, combined with Vent Strip (VSZ) at the bottom of the sheathing.



## STEP 2: Sill Tape

Apply 9" wide XtremeFlashing™ Tape over a sloped sill. Use J Roller or squeegee to apply pressure to pressure sensitive flashing tape.



## STEP 3: Corner Tape at Sill

Flash both corners with Bow-tie or stretched tape.



## STEP 4: Additional Sill Tape

Lap additional 6" wide XtremeFlashing™ over the sill and corners.



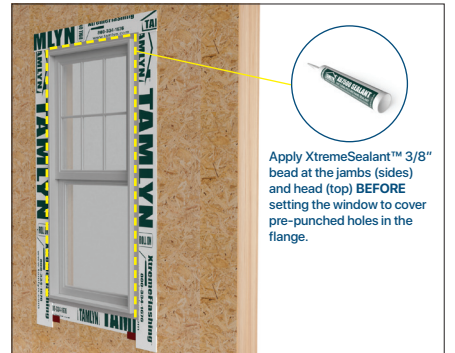
## STEP 5: Jamb and Head Tape

Adhere vertical sections of 6" XtremeFlashing™ over the jamb (side) that should overlap the flashing at the sill (bottom) and extend approximately 3" above the rough opening at the head (top). Apply XtremeFlashing™ Tape at the top to cover the rough opening. Turn or layer flashing into the jamb the depth of the window jamb.



## STEP 6: Install Window

Set the window into the rough opening, plumb, level, square, and fasten to the structure **per window manufacturer's recommendation**. XtremeFlashing™ should be visible and behind the sill flange. **Do not apply XtremeFlashing™ over the bottom flange.**



## STEP 7: Jamb Tape on Flange

Lap additional 6" wide XtremeFlashing over the jamb flange on both sides. Use J Roller or squeegee to apply pressure to pressure sensitive flashing tape.



## STEP 8: Drip Edge Detail

For best practice, install XtremeTrim® Window Flashing above the window head (top). Drip cap should be back bedded to sealed.



## STEP 9: Drip Edge Tape Detail

Adhere XtremeFlashing™ and overlap the XtremeTrim® Window Flashing. Head (top) section must extend beyond jamb flashing 2" both sides.



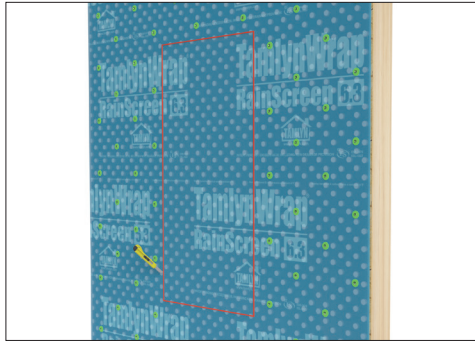
**STEP 10: Double Side Tape at Window Sill, Jambs, Window Head**

Adhere sections of XtremeSeam™ Double Sided Tape over the jambs and head. Do not peel off the liner until the TamlynWrap® Rainscreen is ready to be installed.



**STEP 11: Rainscreen Wrap Install**

Cut the opening from the wrap around the window frame. Peel/remove the liner from the pre-installed XtremeSeam™ double sided tapes and adhere TamlynWrap® Rainscreen (6.3 or 10.1) on all sides with pressure. Cap-fasten TamlynWrap® Rainscreen (6.3 or 10.1) every 3 square feet all through the installed area with shingle lap fashion (i.e. begin installation at the base of the wall to fit the assembly).



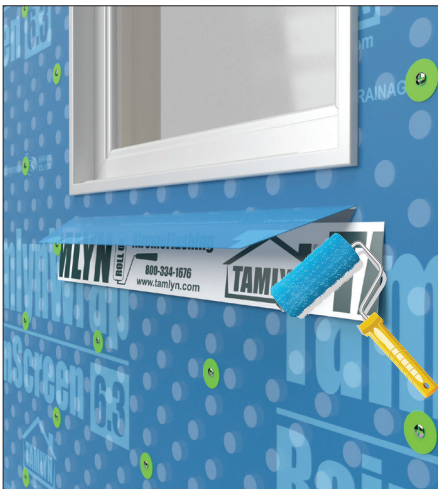
**STEP 12: Bottom Tab Opening**

Cut 4" below the sill and provide (2) 45° degree angled cuts towards the horizontal cut and create a bottom tab.



**STEP 13: Tab Opening Flashing**

Lap 6" XtremeFlashing over the TamlynWrap® Rainscreen and tape it right below the flange.

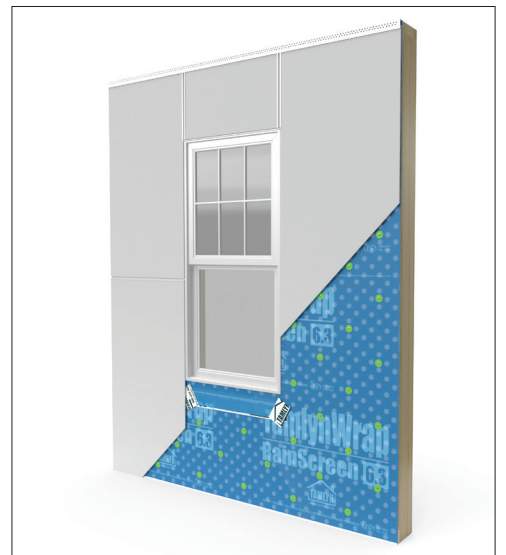


**STEP 14: Rainscreen Wrap Installation**

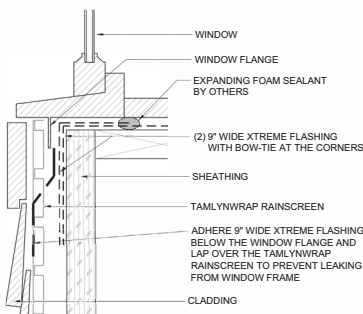
Tape the Tamlyn® Rainscreen back in place when done to ensure the bottom tab will not be damaged due to wind or any other unpredictable circumstances.



**Finished Product**



**Tab Opening Flashing Detail:**



**Notes:**

- Tamlyn® Rainscreen should be installed in shingle fashion. To ensure this, best practice is to start from the bottom of the wall and work up. Proper shingling is required to shed water and to prevent water from entering the wall system.
- Use commonly available **scissors/knife** to cut Tamlyn® Rainscreen. Do not cut the cavity spacers with scissors/knife.
- Apply **expanding foam sealant** at inside window frame perimeter for air barrier purpose.
- Cap Fasteners should provide a minimum **1/2"** penetration into the nail base and be spaced approximately **12 to 18** inches apart along the horizontal and vertical laps.
- Overlap all horizontal seams by at least **6"**, all vertical seams by at least **6"** with double sided tape flashing.